

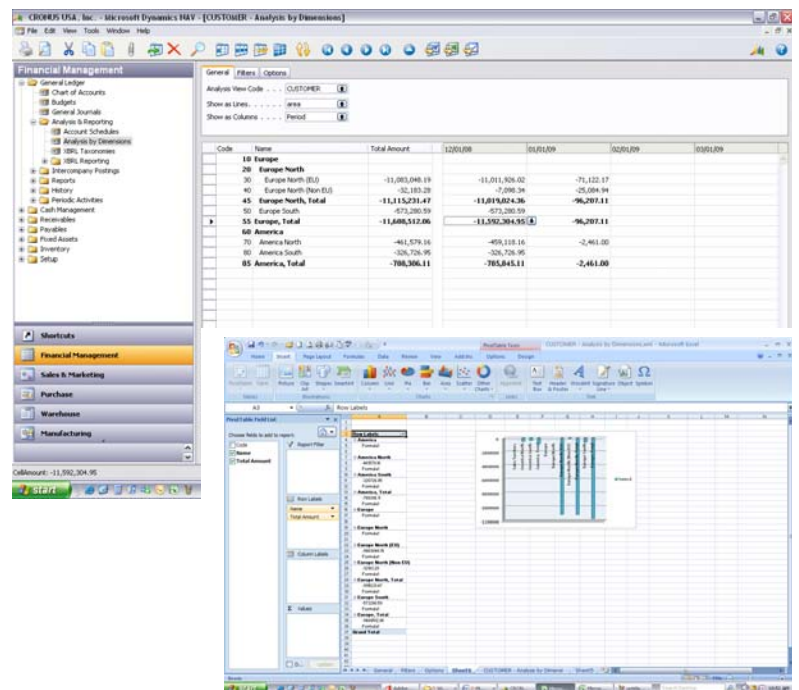
# Business Intelligence

## Business Intelligence in Microsoft Dynamics-NAV

### Benefits:

- **Deliver decision-driving information across your organization.** With the right information made available on demand decisions can be arrived at with confidence. Use all the business metrics to gather the data you need to make those decisions.
- **Fuel productivity with relevant information and tools.** Utilizing the powerful reporting tools and on screen analysis, not only can historical data be analyzed for improvement but to proactively approach problems and their causes.
- **Work smoothly with Microsoft Office system programs.** Use the programs you are familiar with the further enhance the information already available. With easy import and export share information internally or externally with others.
- **Help accelerate speed and performance with SQL Server technologies.** Use SQL Server 2005 and SQL Reporting Services to meet all of your reporting requirements. Customized reports can be created to meet any need for control or examination.

With the superior reporting power of business intelligence the information you provide throughout your organization will have impact and significance. With information updated instantaneously and the vast array of reporting capabilities you and your staff can make decisions based on actual, projected or historical data. The tools range from on line analytical processing (OLAP) cubes to web-based delivery options.



*Additional reporting capabilities are made simple with the ease of import to Microsoft Dynamics - NAV*

### Build Your Business Intelligence Capabilities

With Microsoft Dynamics-NAV, organizations can benefit from access to real-time, integrated data and built-in access and analysis tools. Your business can extend its intelligence capabilities with more complex view of business data and access to big-picture overviews of company data by adding dedicated business intelligence software built on powerful, security-enhanced Microsoft ® SQL Server™ 2005 Platform.

## FEATURES:

<b>Business Analytics</b>	Advanced analytical tools allow a panoramic view of all business performance. Set up and view customized graphical displays and reports. Specific analysis can be done with the detailed data provided in Microsoft Dynamics-NAV for in-depth study of specified areas in your business.
<b>Flexible information views</b>	Setting filters and customized sorts with drill-down capabilities allows you to analyze sales and profitability trends, inventory change, marketing campaign trends and more.
<b>Microsoft Office integration</b>	With full integration with the programs you are familiar with data from Microsoft Dynamics-NAV can be exported for further analysis. You can utilize the power of these other products such as Excel, Word or Microsoft Outlook.
<b>Employee Portal</b>	Using Employee Portal in Microsoft Dynamics-NAV you can provide use of online access. The web-based interface is build on Microsoft Windows® SharePoint Services.
<b>Customized Reporting</b>	Customized reports can be created from scratch using the step-by-step report wizards. SQL Server 2005 Reporting Services can extract data on an as-needed basis.
<b>Dimensions attributes</b>	Dimensions define your companies requirements for detail. Defined characteristics such as product types, sales regions, company size or time periods can be utilized to build reports that reflect your companies structure.
<b>OLAP cubes</b>	Work within an intuitive Outlook interface to build targeted analyses using predefined or customized OLAP cubes, and then deliver analysis directly to people's desktops.
<b>Record links</b>	Add links within Microsoft Dynamics-NAV records to external information and then store the data within Microsoft SharePoint Services for easy access and sharing.
<b>Open Database Connectivity (ODBC)</b>	Enhance reporting and analytics capabilities with and ODBC driver that supports most business intelligence tools on the market.
<b>Integrated Development Environment</b>	Streamline development with a build-in IDE that enables you to support your specific business requirements and changing needs.

**For more information about Business Intelligence in Microsoft Dynamics-NAV, visit [www.dynamicsinfo.com](http://www.dynamicsinfo.com)**